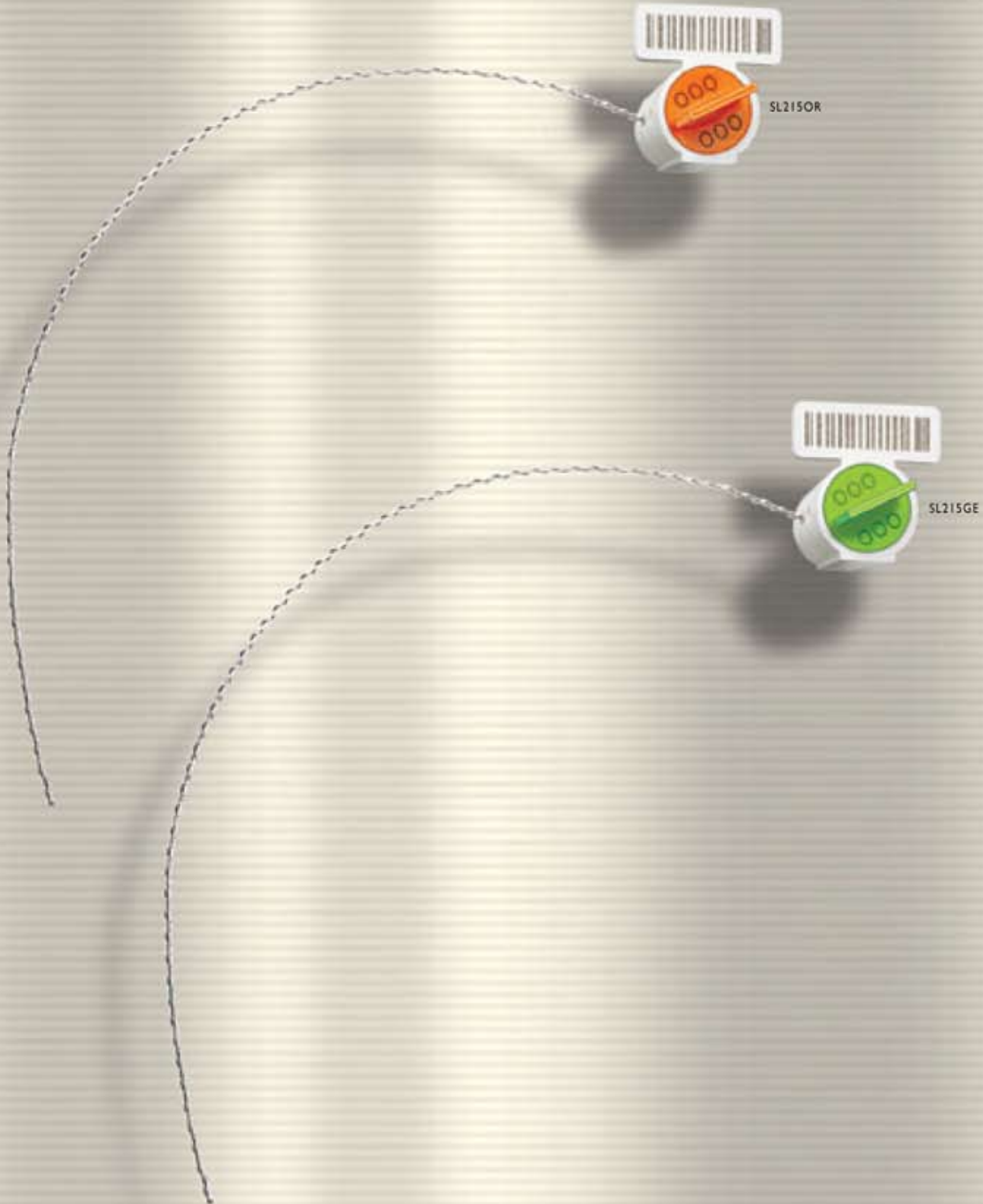


SL215

# SEALERTAG

MANAGEMENT AND TRACKING OF PRECISION MACHINERY



# SL215 SEALER TAG

This tag is a very effective tracking tag for managing purpose, it can be used in the management and tracking of precision machinery, equipments and facilities such as:

1. Water Meter
2. Gas meter
3. Electric meter
4. Public transportation vehicle meters, such as taxi and bus...etc.
5. Various precision machinery and equipments to prevent from non-authorized personnel to operate the said equipments.

## SL215 RFID Sealer Tag Specification

Model No.	SL215
Reading Distance	40mm
Base on GK4001 chip, with EM9917 reader	
Operating temperature	-40°C to 70°C
Storage temperature	-40°C to 80°C
Material	ABS
Shower proof	Y
<b>Technology</b>	
GK4001 (125KHz,64bit,R/O)	Y
H4102 (125KHz, 64bit,R/O)	Y
I-Code SLI (13.56MHz,1024bit,R/W)	Y
Mifare S50 (13.56MHz,1KByte,R/W)	N
Temic E5557 (125KHz,330bit,R/W)	Y
Hitag 1 (125KHz,2048bit,R/W)	Y
Hitag 2 (125KHz,256bit,R/W)	Y
Legic 256 (13.56MHz,256Byte,R/W)	Y

